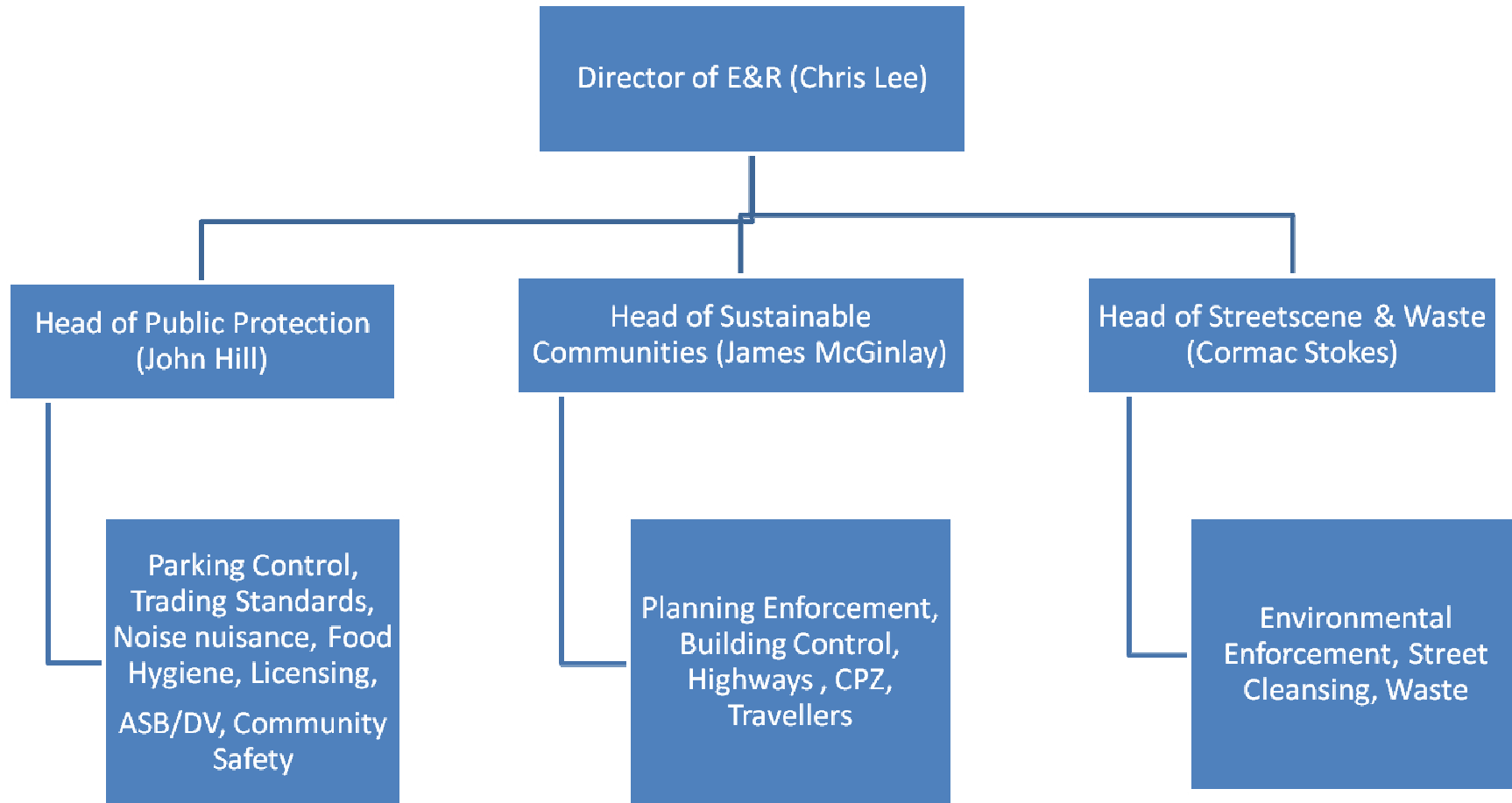


# Appendix A

## An Overview of E&R Enforcement

Report to Overview & Scrutiny  
Commission (September 15<sup>th</sup>, 2015)

# Division of enforcement responsibilities in E&R



# Brief chronology

- **July 2006** : Task group of Overview & Scrutiny Committee : review of Council enforcement policies, this resulted in a report consisting of 14 key recommendations (appendix C)
- **January 2007** : Recommendations adopted by O&S;
- **June 2009** – Adoption of Overarching Enforcement Policy by O&S (appendix B);
- **3<sup>rd</sup> September 2009** : Update on progress to O&S;
- **29<sup>th</sup> November 2010** : Update to LSG where it was agreed that 14 original recommendations had been delivered. Future reports to be updates on main issues/successes etc.
- **15<sup>th</sup> March 2011/24<sup>th</sup> April 2012** : Update Report to Sustainable Communities O&S Panel

# Services with element of enforcement

- Planning;
- Building Control;
- Licensing;
- Environmental nuisance;
- Trading Standards/Food hygiene;
- Waste;
- Parking;
- ASB

# What is enforcement meant to achieve?

- To contribute to ensuring a safe, clean and green environment in which to live and work;
- It is meant to complement and be used appropriately and proportionately;
- Should not always be first course of action to resolve issues;

# Pan-Divisional approach to enforcement

- Overarching Enforcement policy framework;
- ERTG (Enforcement Review Task Group);
- LMAPS (Local Multi Agency approach to problems).

# Key performance indicators

- Number of food hygiene inspections;
- Number of Planning enforcement cases closed;
- Success at various appeal fora;
- Local enforcement charters;

# Key pressures on delivering enforcement

- Increasing volume of legislation/responsibilities – Issues are often complex – “Narrow & Deep”;
- Often just one part of an officer’s wider role;
- Resources vs. Caseloads;
- Consideration of cost of legal action;
- Competing priorities : Budgetary constraints and how these affect our ability to enforce;
- More reactive than proactive with greater reliance on local intelligence;



# Key successes

- What does success actually mean?
- POCA (Proceeds of Crime Act);
- Successful prosecutions against fly-tipping;
- Marian Road – Planning Enforcement;
- Some of the joined up/Partnership working – eg. Dennison Road, Monarch Parade;
- Deer Park Road;
- Comms. action plan;
- Kingdom Security.

# New approaches to enforcing

- Need to ensure that we have best delivery model – TOM effectiveness & VFM of any given approach;
- Shared Regulatory Service – resilience, increased skills base, pooling of expertise.
- Work being done across directorate to scope a more generic approach;
- Other opportunities - sharing discrete elements of a service as opposed to full blown shared service or the option to outsource certain enforcement functions;
- Greater use of local intelligence;
- Make it easier for public to report potential breach via self service;
- Training/workshops – for Residents/Business'/Members;